



Before  
Farm Visit  
Workbook



Stage 1:

Years  
1 & 2

**CITY FARM PTY LTD**

**ABN 17 141 123 631**

31 Darling St Abbotsbury NSW 2176

PO BOX 58 Sutherland NSW 1499

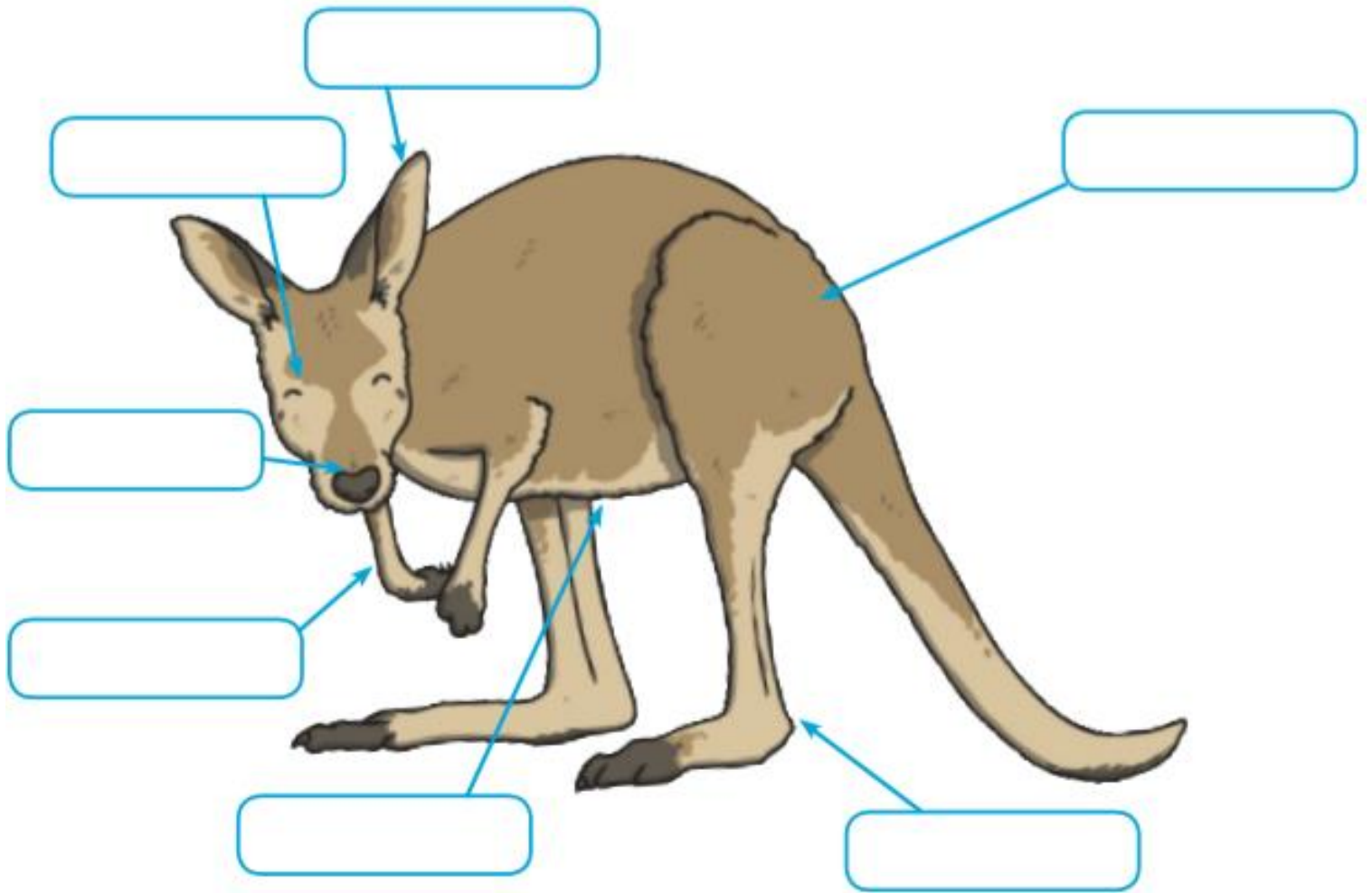
Phone 02 9823 3222

Fax 02 9823 4067

Email: [info@calmsleyhill.com.au](mailto:info@calmsleyhill.com.au)

Web Site: [calmsleyhill.com.au](http://calmsleyhill.com.au)

# Label the parts of the kangaroo



Snout

Eyes

Arms

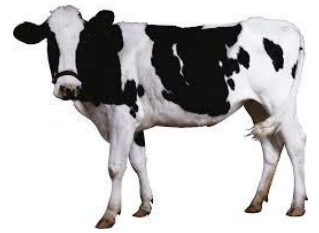
Legs

Pouch

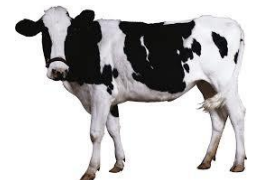
Tail

Fur

Circle the native animals



Draw a line between each product and where it comes from



## Where will you find these animals?

Duck

Koala

Cow

Camel

Kangaroo

Bush

Desert

Tree

Water

Farm

Fill in the blanks using these words:



Light



Water



Soil

Many plants need \_\_\_\_\_ from the sun.

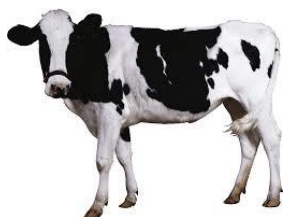
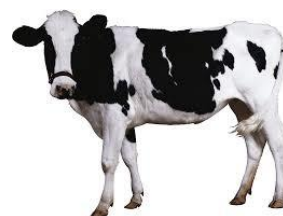
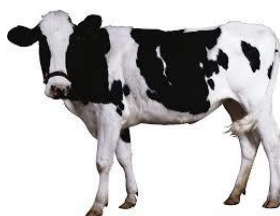
Many plants need \_\_\_\_\_ or they will dry out.

Plants need \_\_\_\_\_ to grow their roots in.

Make your own graph:

Colour in each square to show how many of each animal there are!

COWS	PIGS	SHEEP



Which is the largest group: \_\_\_\_\_

Which is the smallest group: \_\_\_\_\_

## Show the farmers how you solve these problems!

1. If a cow needs 1 scoop of grain, and there are 4 cows, how many scoops does the farmer need?

Answer: \_\_\_\_\_

2. If 3 chickens each lay 2 eggs, how many eggs are there altogether?

Answer: \_\_\_\_\_

3. 2 goats each have 2 kids. How many kids are there?

Answer: \_\_\_\_\_

## Your turn to draw!

Draw a chicken.

Draw a pig.

# Colour the farmhouse

